

# MONARFLOOR® ABSORPTION PANELS: INSTALLATION INSTRUCTIONS

## Before You Start

*These instructions are applicable to the installation of Monarfloor® Absorption Panels.*

### Tools & equipment required

*If fixing using Spacers only:*

- 4 x Monarfloor® Absorption Panel Spacers for every Absorption Panel
- Drill/screwdriver
- Wall fixings/screws (to fit spacers)
- Wooden batten (temporary)

### *If fixing using Spacers and Adhesive:*

In addition to the above:

- Monarfloor® HD Contact Adhesive

**Note:** Prior to installation test bond between wall and panel to ensure compatibility.

- Brush or roller (to apply adhesive)
- Utility saw, utility knife and straight edge (for cutting panels – if required)

### Check walls and panels are suitably prepared

Prior to installation ensure walls and panels are free of dust or loose debris.

Panels should be installed at room temperature.

### Care of panels

Panels must be kept in a dry storage area at room temperature at all times.

### Cutting panels to size

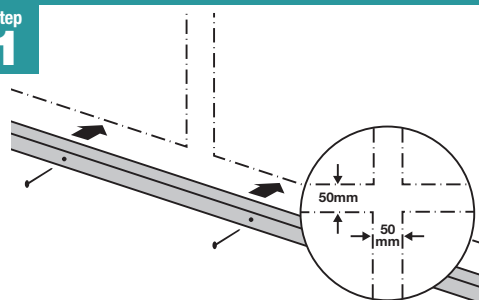
Should any cutting be required on site then the fabric face and edges should be cut using a sharp utility knife and straight edge. The acoustic foam can then be cut using a utility saw.

### Working safely

When installing and cutting panels ensure appropriate PPE is used.

## Installing Monarfloor® Absorption Panels

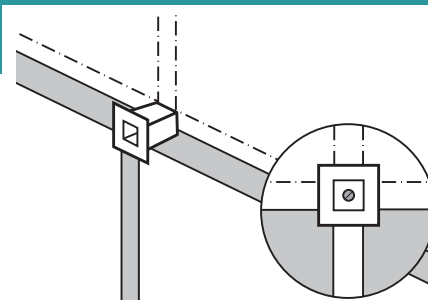
Step  
**1**



On the wall mark out surface guide lines for the location of the Absorption Panels and then fix a temporary batten onto the wall to support the first run of panels.

**Note:** A 50mm gap is required between both horizontal and vertical panels when panel spacers are used.

Step  
**2**

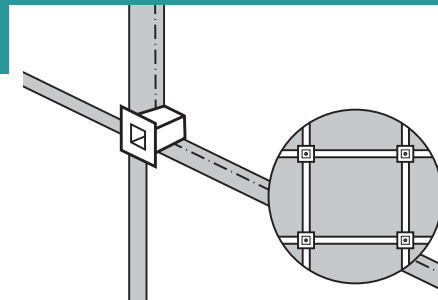


### *If fixing using Spacers only:*

Using the batten as a support, fix the first row of Absorption Panels along the length of the wall using Monarfloor® Absorption Panel Spacers at the bottom and top corners of each panel to both hold them and ensure equal spacing between them.

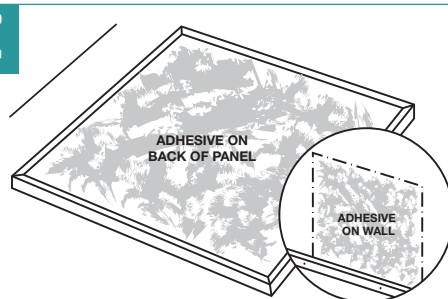
**Note:** It is recommended that Spacers be fixed to the wall using self-tapping screws suitable for the substrate.

Step  
**3**



Continue to fix the of Absorption Panels to the wall using the same procedure as in Step 2 using Monarfloor® Absorption Panel Spacers to hold them and ensure equal spacing between them.

Step  
**4**



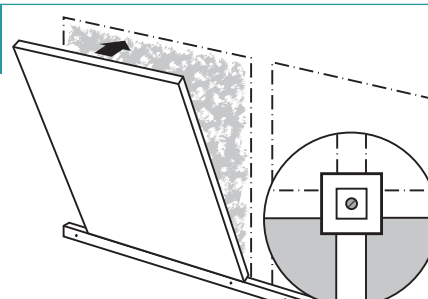
### *If fixing using Spacers and Adhesive*

Lay the first Absorption Panel face down on a suitable working area ensuring it is fully supported. Using a brush or roller apply Monarfloor® HD Contact Adhesive onto the rear of the panel until it is fully covered with adhesive, ensuring no adhesive is applied to the edge of the fabric.

Apply a corresponding area of a Monarfloor® HD Contact Adhesive onto the wall.

**Note:** Adhesive should be applied in well vented rooms.

Step  
**5**

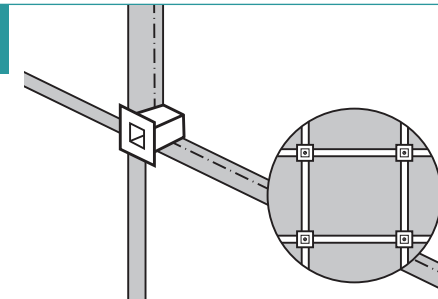


Allow adhesive to 'tack off' for approximately 2-3 minutes then adhere the panel to wall applying pressure to obtain full bond.

Use Monarfloor® Absorption Panel Spacers at the bottom and top corners of each panel to both hold them and ensure equal spacing between them.

**Note:** The Absorption Panel can be moved as required or removed within the first 5 minutes (dependant on the substrate and ambient room temperature).

Step  
**6**



Using the same procedure as in steps 4 and 5, fix the panels along the length of the wall using Spacers to hold them and ensure equal spacing between them.

**Note:** Panels will be fully bonded to the wall within one hour (dependant on the substrate and room temperature).